

QUICK START GUIDE – LIFETONE HL™ BEDSIDE FIRE ALARM AND CLOCK MODEL HLAC100

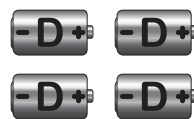
Thank you for purchasing the Lifetone HL™ Bedside Fire Alarm and Clock. These items are included:



HLAC100



Bed Shaker



4 D Cell Alkaline Batteries



HLAC100 User's Manual

PLACETHE LIFETONE HL™ NEXT TO YOUR BED WITH THE SPEAKER FACING THE PILLOW.

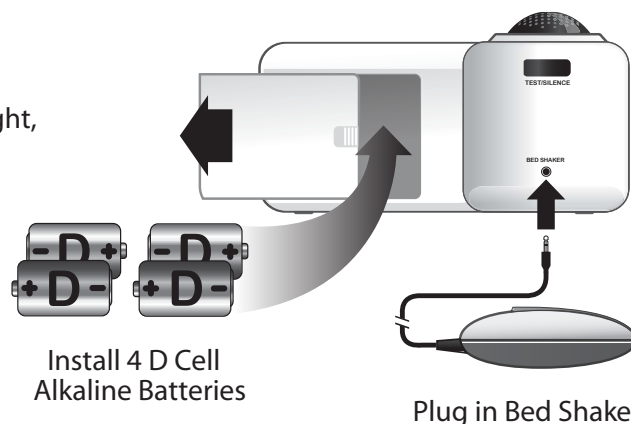
STEP 1 - POWERING THE HLAC100™

1. Remove the battery door located on the back of your clock.
2. Insert four D cell alkaline batteries, as shown in the illustration at right, matching the polarity (+ and -) signs in the open compartment.
3. Replace the battery door securely.
4. Plug the Lifetone HLAC100™ into an electrical outlet near your bedside.
5. You may plug the bed shaker in on the back of the clock now or at any time after it has been set up.

The word "TEST" will now be flashing on the screen. Go to STEP 2.

NOTE:

The batteries are for backup in the event of a power outage only. The HLAC100 is not meant to operate on batteries alone.



Install 4 D Cell Alkaline Batteries

Plug in Bed Shaker

STEP 2 - SMOKE ALARM COMPATIBILITY

This important test will determine if your smoke alarms are compatible with the Lifetone HL™.

1. The word "TEST" is flashing on the screen. Press the red TEST/SILENCE button on the back of the clock. The word "TEST" will stop flashing for 30 to 50 seconds.
2. When "TEST" starts flashing again, locate the most distant smoke alarm you want detected.
3. Press and hold the test button on the smoke alarm until the Lifetone HL™ alarm sounds. Between 7 and 9 smoke alarm T3 cycles (groups of 3 beeps) will be required. This takes about 30 to 40 seconds.
4. When the Lifetone HL™ alarm sounds and "FIRE" appears on the screen, the test has been successful.
5. To stop the alarm, press the red TEST/SILENCE button on the back of the clock.
6. If all tests are passed, the "12 hr" time display option will flash on the screen, and you may now set the clock. Go to STEP 3.

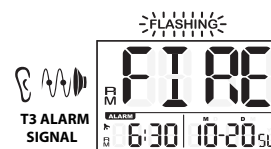
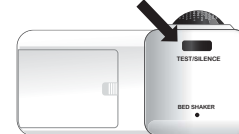
NOTE: If the clock is flashing all segments as shown below and beeping at short intervals, your smoke alarm was not detected or is not compatible with the LIFETONE HL™.



BEEP!

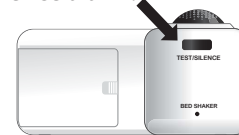
FLASHING

Press TEST/SILENCE button to start the test.



Smoke alarm has been detected.

Press TEST/SILENCE button to silence alarm.



Successful test. You may now set the clock.

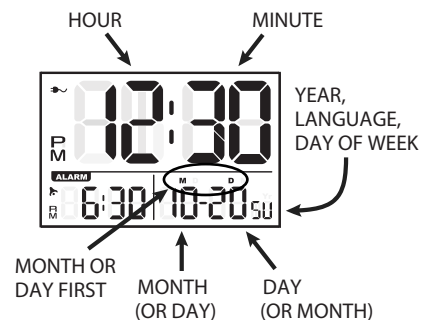
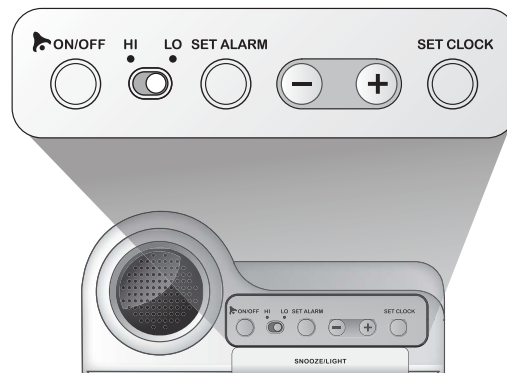
Unplug the clock and remove one battery. Repeat the set up beginning with STEP 1- POWERING THE PRODUCT. You may need to choose a closer smoke alarm. If the compatibility test fails again, the smoke alarm may not be compatible. Unplug the clock and remove the batteries. See the section titled "UNSUCCESSFUL SMOKE ALARM COMPATIBILITY TEST" in the user's manual.

STEP 3 - SETTING THE CLOCK

1. On the time display, "12hr" is flashing. To select 24 hour time, press + or - .
2. Press SET CLOCK. The hour will flash. To change the hour, press + or - .
3. Press SET CLOCK. The minute will flash. To change the minute, press + or - .
4. Press SET CLOCK. The year will flash. To change the year, press + or - .
5. Press SET CLOCK. The small "m" and "d" will flash. To change to a day-first display of the date, press + or - .
6. Press SET CLOCK. The month will flash. To change the month, press + or - .
7. Press SET CLOCK. The day will flash. To change the day, press + or - .
8. Press SET CLOCK. The "E" (for English) will flash. To change to Spanish or French, press + or - . Press SET CLOCK again.
9. The clock will show the day of the week to the right of the date. If you prefer to display the year instead, press SET CLOCK again.

NOTE: Any time that you need to reset the clock, press and hold SET CLOCK until the flashing "12hr" appears, and repeat all parts of STEP 3.

Buttons on the top of the Lifetone HL™

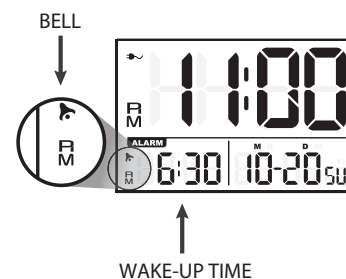


STEP 4 - SETTING THE WAKE-UP ALARM

1. Press and hold SET ALARM until the wake-up hour flashes. To set the hour, press + or - .
2. Press SET ALARM. The minute will flash. To set the minute, press + or - .
3. Press ON/OFF to enable or disable the wake-up alarm. The bell icon at lower left will appear or disappear to indicate whether the alarm is active or inactive.

You can adjust the volume of your wake-up alarm to high or low with the HI - LO slider switch on top. If there is a fire emergency the alarm will sound at maximum volume.

NOTE: Any time that you need to reset the wake-up alarm time, press and hold SET ALARM until the hour is flashing and repeat all parts of STEP 4.



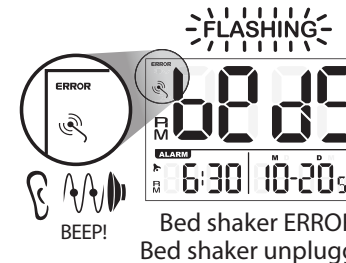
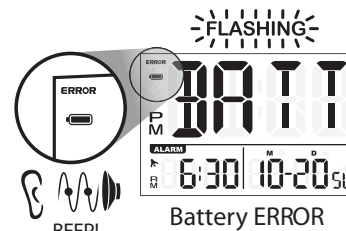
TROUBLESHOOTING ERROR MESSAGES

Batteries: If the clock is flashing "BATT" and beeping at one minute intervals, the batteries were not installed, were installed with the wrong polarity, or are below the required voltage. Remove and insert them again or replace them if necessary. Be sure to match the polarity (+ and -) signs in the battery compartment. To keep your compatibility set-up, leave the clock plugged in while you change batteries.

Bedshaker: If the screen is flashing "beds" and the clock beeps, the bed shaker has come unplugged. Seat the bed shaker plug firmly into the jack on the back of the clock.

NOTE: If you decide you don't want to use the bed shaker after it has been installed, unplug the bed shaker then press and hold the red TEST/SILENCE button on the back of the clock for 2 seconds. That starts a manual self-test that will display "TEST" for 10 to 20 seconds, sound the fire alarm once, and "retrain" the clock to operate without a bed shaker.

NOTE: Any time that you want to restore use of the bed shaker, simply plug it in.



800 Research Parkway, Suite 339
Oklahoma City, OK 73104

PLEASE READ THE USER'S MANUAL COMPLETELY AND THOROUGHLY FOR FURTHER DIRECTIONS, PRODUCT FEATURES AND WARRANTY INFORMATION

For more information, go to www.lifetonesafety.com
or call Customer Service 1-800-648-7923

MODEL HLAC100

KEEP THIS QUICK-START GUIDE IN A SAFE PLACE

Doc# LTQSG100 110831